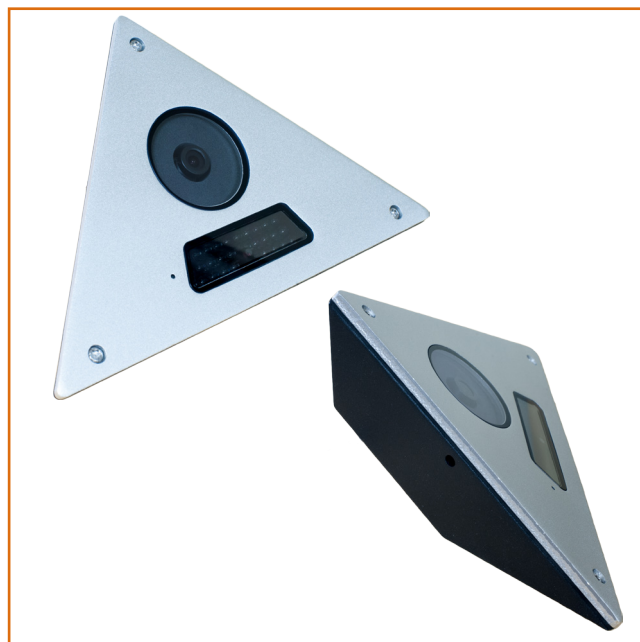




# IP2-LCEI29

## 2MP IP Lift / Corner Camera

- Vandal Resistant Aluminium Housing
- Ideal for any internal corner fixing
- 1080P Full HD Resolution
- Triple Streaming
- Superb Low Light performance
- 2.9mm Fixed Lens
- 10m IR Range (30 invisible LEDs)
- True Day / Night IR Cut Filter
- ONVIF Profile S Compliant
- 12V DC / PoE



### Technical Specification

Image Sensor	1/2.9" Sony Exmor CMOS
Horizontal Resolution	2MP 1080P
Scanning System	Progressive
Effective Pixels	1984(H) x 1105(V), 2.19 Megapixels
Streaming Options	H.264, MPEG4, MJPEG Compression
Stream Options	Main Stream Max: 1920 x 1080 @ 25pps (H.264, MPEG4, MJPEG) Second Stream Max: 1280 x 720 @ 25pps (H.264, MPEG4, MJPEG) 3rd Stream Max: 640 x 360 @ 15pps MJPEG (if 2nd stream set to 720 x 576)
Lens	2.9mm Fixed Megapixel Lens
IR LED	30 IR LEDs (invisible)
Day & Night Function	Auto / Day (Colour) / Night (B&W), ICR Control Individual Day / Night Exposure Settings
Sensitivity	Colour: 0.1 Lux, BW: 0 Lux (IR on)
Privacy Area	On / Off (6 Programmable Zones)
Motion Detection	48 Zone, Sensitivity 1-5 steps, On / Off
WDR	Digital Wide Dynamic Range: Off / 1-5 steps
Backlight	Off / BLC
Noise Reduction	3DNR: Off / 1-63 steps
Electronic Shutter	Auto (1/15~1/15000), Rolling Suppression, Manual
Image Adjustment	Brightness / Contrast / Saturation / Sharpness / Hue
White Balance	Auto / Indoor / Outdoor / Fluorescent
OSD Display	Text, Data, Time, Event, On/Off
Image Flip	Normal / Mirror(H) / Flip(V) / Both(H&V)
Ext. Video Out	Analogue Composite Signal (1.0Vp-p, 75Ω)
Power	PoE / 12VDC ±10% (via supplied pre-cabled adaptor)
Operating Temperature	0°C ~ 50°C
Humidity	0% ~ 90%
Dimensions	190mm (W) x 140mm (H) x 42.3mm (D)
Weight	390g