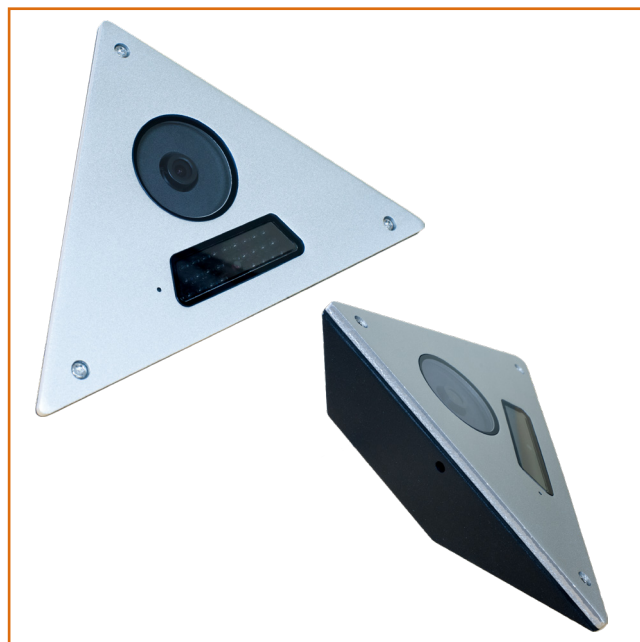




HCL-EI29

4-in-1 HD Corner Mount Lift Camera

- Vandal Resistant Aluminium Housing
- Ideal for any internal corner fixing
- 1080P Full HD Resolution
- AHD / TVI / CVI / CVBS Output
- Superb Low Light performance
- 2.9mm Wide Angle Fixed Lens
- 10m IR Range (30 Invisible LEDs)
- True Day / Night IR Cut Filter
- 12V DC



Technical Specification

Image Sensor	1/2.8" Sony Exmor CMOS
Resolution	2MP 1080P
Scanning System	Progressive
Video Out	AHD / TVI / CVI : 1080P Analogue Composite Signal (1.0Vp-p, 75Ω)
Lens	2.9mm Fixed Megapixel Lens
S/N Ratio	More than 50dB (AGC Off)
Sensitivity	Colour: 1 Lux, BW: 0.5 Lux Colour in DSS: 0.002 Lux, BW in DSS: 0.0008 Lux
WDR	Digital Wide Dynamic Range
Sens Up	Off / x2 - x30 Levels
Noise Reduction	DNR
Backlight	Off / BLC
IR LED	30 IR LEDs - Invisible
Power	12V DC @ Max 4W (IR On)
Operating Temperature	-10°C ~ 50°C
Humidity	10% ~ 85%
Dimensions	190mm (W) x 140mm (H) x 42.3mm (D)
Weight	390g